



Chelmsford Northeast Bypass – Advanced works

Final Project
Newsletter

January 2024

Welcome to the final edition of the Chelmsford Northeast Bypass (CNEB) advanced works newsletter, produced by Octavius Infrastructure, working for Essex County Council.

We have made great progress over the past few months which has seen completion of the final structural concrete works to the bridge.

The final stages of the project are underway with the drainage, approaches and embankments being completed at the end of January 2024.

The tarmac surfacing and bridge fencing barriers will be complete during February 2024 which will complete the bridge, ready for final inspection.

What has been happening so far?

The superstructure of the bridge is now complete, along with the main drainage ditches. The embankment approaches are also nearing completion.

The remaining works are the finishing works to the top of the bridge and finishing the final embankment approaches and drainage.



Site Photo's

Waterproofing to bridge deck



Completed bridge structure



Embankment approach nearing completion



The completion of the enabling works at the Bulls Lodge Quarry will now enable the first phase of the Chelmsford Northeast Bypass to start in early 2025.

Sustainability and social value news

We measure our social value impact using Thrive, a calculation software tool. The value is calculated using Essex County Council TOMs (Themes, Outcomes and Measures) framework, which is fully aligned to the Government Social Value Model. The latest Thrive report can be found on page 5.

Project Summary

Over the course of the project, we have helped several local organisations in a variety of ways through social value and sustainability events to meet the commitments we promised at the outset. Below are examples of some of the events.

Chelmer Valley High School Site Visits x2



Sustainability and social value news continued...

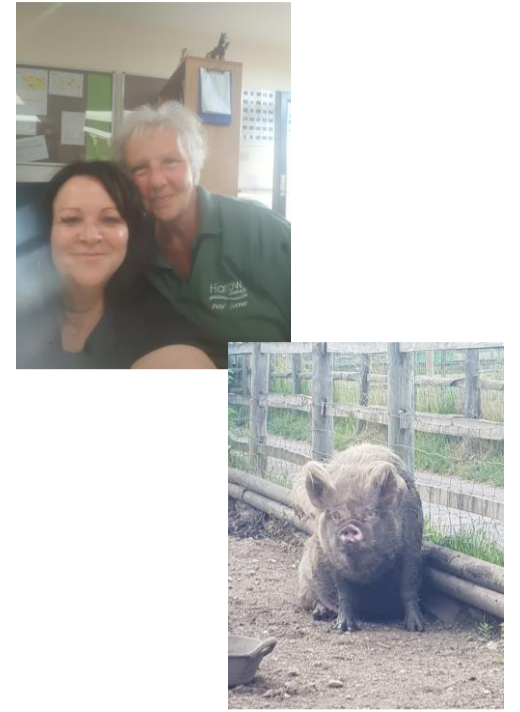
Ace Music Therapy Community Christmas Concert



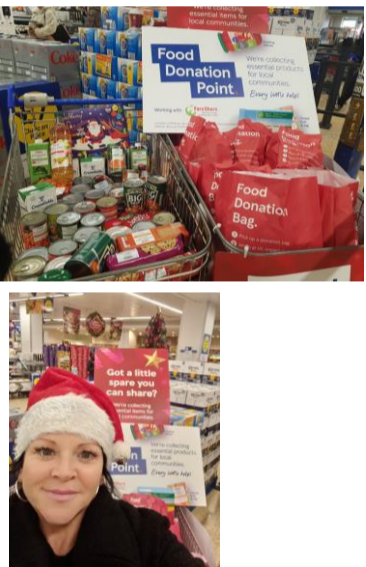
CHES Homeless Rock Choir Event



Pets Corner Volunteer Day



Tesco FareShare food collection



Kid's Inspire, Hampers, Toys & Cheque Donation



The Conservation Volunteers – Danbury Common & Highwoods Country Park

FIR – Training. Fairness, Inclusion & Respect.

Three of our Chelmsford Site Team attended the Supply Chain Sustainability School's Fairness, Inclusion and Respect Training on 18th January 2024. It was set over three hours with interactive sessions to share ideas with each other, including representatives from other construction and infrastructure companies. We learned about diversity percentages in the UK Construction industry, e.g. 14.3% female employees, 7% ethnic minority employees, 13.1% employees with a disability, 93.6% heterosexual employees. This training and knowledge will help us strive to change these figures for the better which will make construction a fairer, more inclusive industry where all people feel safe, heard and respected.



Sustainability on site



We have ensured Oak Trees are protected throughout the project, while we also introduced a wheel wash at our site entrance/exit to help keep surrounding roads clean. The culvert effectively kept the flow of the Boreham Brook as normal to support local wildlife.

How has our QS Apprentice found the role?

We caught up with Mike George, our Quantity Surveyor Apprentice, to find out about what he has learned as his role on the scheme comes to an end.

“In recent months, I have been able to witness further progression of the bridge. This has included earthworks, drainage, steel fixing and technical concrete pours. Through my involvement with this project, I have gained valuable experience in managing the financial aspects of construction. One of my responsibilities has involved account management with the subcontractors, reviewing and certifying payments and addressing any issues raised. I now feel I have contributed to the overall success of the project by ensuring subcontractor relationships are effectively managed, costs are controlled, and financial goals are met.”



Want to know more?

To find out more about our advanced works and the Chelmsford North East Bypass, please visit: www.essexhighways.org/chelmsford-north-east-bypass.

Please email any enquiries about the advanced works or Chelmsford North East Bypass project to CNEB@essexhighways.org.

If you have a general highway enquiry, please contact the Essex County Council customer service team via the online form at: www.essex.gov.uk/enquiries, or call 0345 603 7631 if you have an urgent highway matter you wish to report.

Have you signed up to our Chelmsford North East Bypass email newsletter? Subscribe at: www.essexhighways.org/chelmsford-north-east-bypass

The Chelmsford Northeast Bypass – Advance Works Thrive report To end December 2023

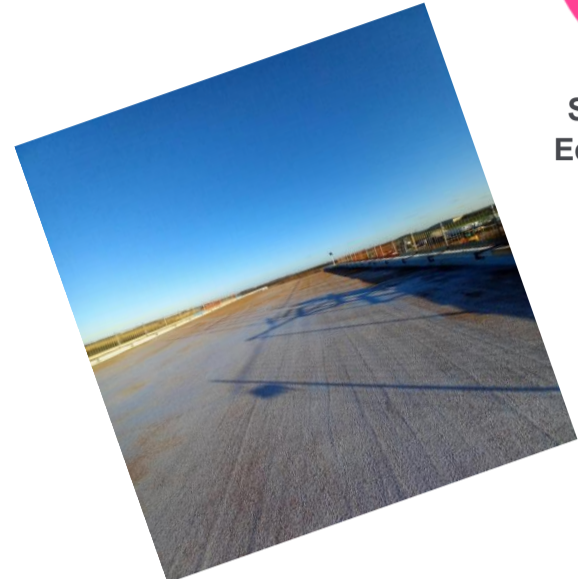


£1,936,097.00 Total Social Value Added*

Project value: £8,200,000.00



Social & Local Economic Value



Local value

£772k Local spend

£860k Spend with local SMEs

6 Local hires



Social, wellbeing & community

£800 Community donations

56.5 People hours spent supporting community initiatives

2.5 hours delivered to engage people in Mental Health Initiatives



Employment, education & skills

52 People hours of learning interventions delivered.

39 Apprenticeship weeks completed



Sustainability

58,883 miles driven in EV or Hybrid Vehicles only.

1 hour delivering initiatives on single use plastic.

19.5 hours spent volunteering to keep green spaces clean and increase biodiversity.



Octavius Infrastructure Working in Partnership
With Essex County Council

*including local economic value, measured using the Essex County Council TOM's Framework